

N 1500 -C

ELECTROPORATION - CAPILLARY FACIAL AND BODY

UNIQUE WITH APPLICATOR AND CAPILLARY WAVE FORM.



2 Years
Warranty
+TRAINING

N1500 -C
CUTTING EDGE TECHNOLOGY
PROFESSIONAL DEVICE

- BIPHASIC PULSE.
- HIGH VOLTAGE and LOW INTENSITY.
- TOUCH SCREEN DISPLAY.
- IMPEDANCE DETECTOR (ID®).
- CAPILLARY, FACIAL, and BODY DEVICE
- CAPILLARY DEVICE.
- DECAMETRIC WAVES.
- RUNNING-TIME COUNTER.
- SMT MICROELECTRONICS .
- EXPONENTIAL WAVES.

CAPILLARY ELECTROPORATOR. A COMPLETE DEVICE

In an unstoppable search to satisfy the most demanding professional needs NOTO® created N 1500 -C®, combining technology, design and performance for electroporation treatments. N 1500 -C® includes "ID®" (Impedance Detector) system - DEVELOPED BY NOTO®- in its capillary header and facial and body ones.

THE FIRST CAPILLARY ELECTROPORATOR

NOTO® R+D department developed in Argentina the first electroporator for capillary applications with a specific wave form compatible with the scalp, granting painless and effective treatments with the correct therapy's application to achieve the desired results.

Capillary's header gives the professional a comfortable maneuver to penetrate dense and concentrated formulas or drugs.

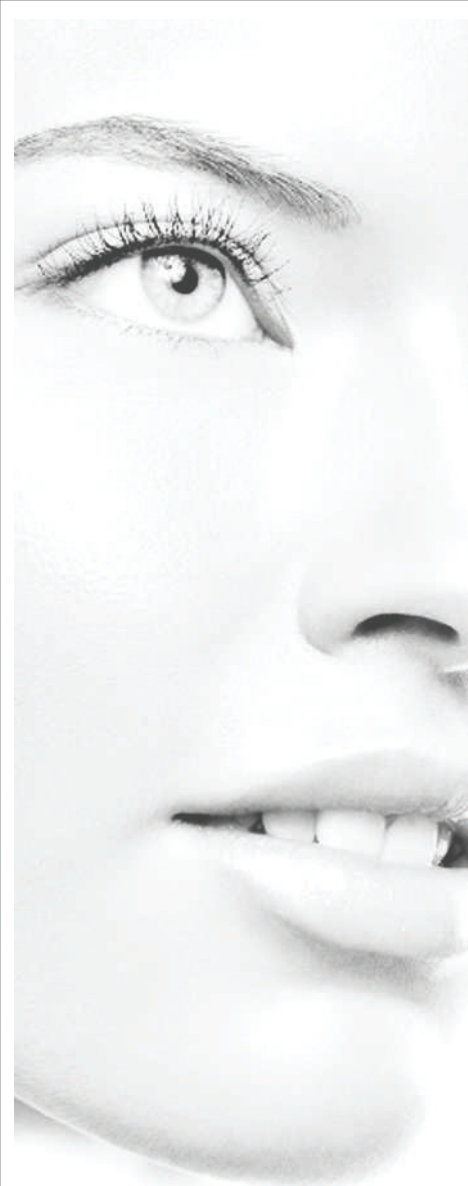
"ID®" SYSTEM (IMPEDANCE DETECTOR)

ID® smart system reveals the professional, with a luminous sensor, the accurate patient-electrode link and the correct emission of the selected current - developed by NOTO®.

This new technology assures treatment safety to professionals.

WELCOME TO NOTO. WELCOME TO TECHNOLOGY!

NOTO®
THE DIFFERENCE OF BEING UNIQUE



NOTO® proposes a different course for aesthetics, a new scenario where therapies combination, cutting-edge technology, and quality products and supplies are fundamental for visible, effective, and durable results - with the launched of N product line.

ELECTROPORATION

Electroporation is the non-invasive alternative to conventional mesotherapy.

Applies short electrical pulses acting on cells membranes increasing its permeability to facilitate active ingredients penetration. This technique is up to 350 times more effective than ordinary application.

N 1500 -C allows the transdermic transference of micro or macromolecules greater than 800.000 Dalton (Da), as hyalurinic acid or heparin - or 500.000 Dalton like collagen.

MAIN ADVANTAGES

- Painless and doesn't produces secondary effects.
- User friendly.
- Place drug or active ingredient on the application zone, placing and moving the header on the selected area until absorption.
- It is cold & heat-less. Athermic current.

CAPILLARY APPLICATION

- Androgenetic alopecia
- Alopecia areata
- Strengthening
- Pre y post surgical
- Thickening
- Pityrosporum ovale

AESTHETICS APPLICATION

- Cellulite
- Localized edemas
- Wrinkles
- Stretch marks
- Flaccidity
- Sprains and ligament distention.
- Contusions and muscular injuries.

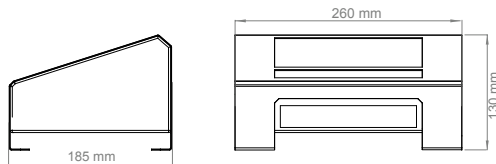
TECHNICAL DATA N 1500 -C:

MANUFACTURED BY:	NOTO GROUP S.A.
COUNTRY:	ARGENTINA
NAME OF THE PRODUCT:	N 1500 -C
WIDE:	185 MM
LENGHT:	260 MM
HEIGHT:	130 MM-75 MM
WEIGHT:	3 KG
POWER SUPPLY VOLTAGE:	98 A 240 V- 50/60HZ
POWER:	22 VA
PROGRAMMING:	MICROCONTROLLER
DISPLAY:	128X64 GRAPHIC TOUCH
SOURCE:	INTERNAL SWITCHING
TECHNOLOGY:	SMT
TIME CONTROL:	MANUAL

NOTE: DEVICE SPECIFICATIONS MAY CHANGE WITHOUT PREVIOUS NOTICE

ELECTROPORATION SET:

1 ACETAL RESIN APPLICATOR.	
1 SURGICAL STAINLESS STEEL HEADER OF 32 MM DIAMETER.	
1 SURGICAL STAINLESS STEEL HEADER OF 15 MM DIAMETER.	
1 ACETAL RESIN AND SURGICAL STAINLESS STEEL CAPILLARY APPLICATOR WITH ID SYSTEM.	
ELECTROPORATION:	
BIPHASIC WAVE FORM:	PROPRIETARY
FREQUENCY:	2,1 KHZ
OUTPUT VOLTAGE :	800 VPP WITH 47 K CHARGE
OUTPUT SYSTEM:	BIPOLAR
APPLICATOR HEADER:	SURGICAL STAINLESS STEEL
FACE:	15 MM
BODY:	32 MM
APPLICATOR MATERIAL:	ACETAL RESIN
CABLE:	INJECTED WITH WIDE CONNECTOR OUTPUT



NOTO supports all clients with a set of tools constantly available.

Tools as training, post-sale service support, and assured spare parts. All these instruments with the objective of making NOTO®'s products your best choice.

MORE EQUIPMENTS BY NOTO:

TRIMAX - TRIPOLLAR RADIOFREQUENCY WITH SENSOR AND CONTROL OF TEMPERATURE.
N 1108 - WORKING STATION. DOUBLE SIMULTANEOUS WAVE PROGRAMMING. 54 PROGRAMS.